

# Directional Speaker Array

## Model DSA

### ADAPTABLE MOUNTING SYSTEM FOR CONTROLLED MULTI-DIRECTIONAL OUTPUT

- Overcomes ambient noise of industrial environments
- Provides maximum speech recognition and tone reproduction
- Produces 121dBc @ 100'
- Three mounting kits available

Federal Signal's Model DSA Directional Speaker Array provides excellent voice and tone reproduction and is ideal for overcoming high levels of industrial noise.

Design flexibility allows the user to combine up to four speaker arrays; each array will hold from two to six re-entrant speakers. Speakers have a 70° horizontal angle of dispersion, accommodating specific sound output patterns. (When vertical stacks are placed 90° apart, a 180° horizontal coverage is possible.)

The Model DSA mounting kits allow for multiple speaker arrays to be mounted on the same pole at 90° increments. The downward tilt can be adjusted by 15°. The mounting flexibility of this system allows the speakers to be pointed directly at a targeted area for more concentrated sound output.

A DSA consists of a corrosion resistant aluminum frame with fiberglass projectors and stainless steel mounting hardware. Each speaker contains a high-efficiency 100-watt driver.

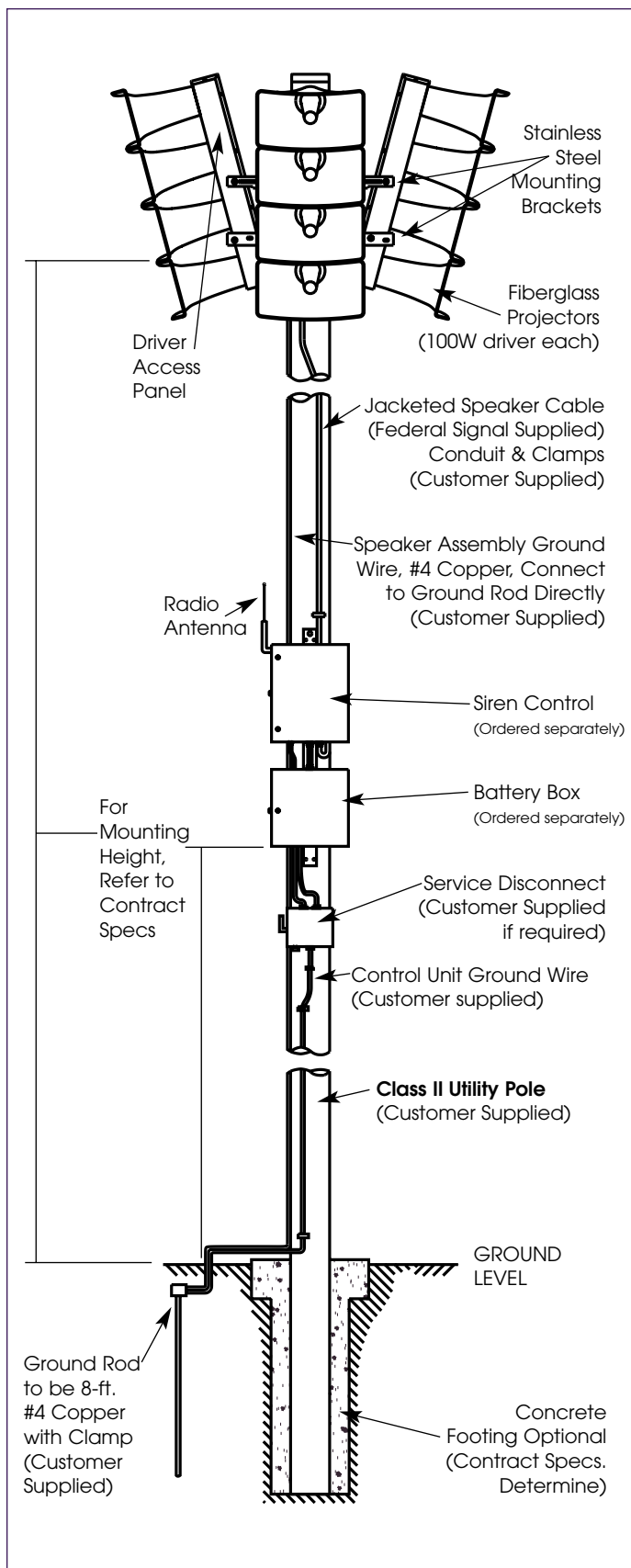
Amplification, tone generation and signal timing are provided by the Model MCP controller, purchased separately.

Ideal for outdoor industrial plant warning, the Model DSA speaker array allows sound coverage to be customized to each site, preventing wasted sound in and around the plant. The Model DSA provides better speech intelligibility within a coverage zone than omni-directional speaker arrays.

Model	# of 100W Speakers	Total Watts	dBC @ 100'	Effective Range	Net. Wt. lbs./kg
DSA2	2	200	111	1,700'	65/29.5
DSA3	3	300	115	2,400'	110/49.9
DSA4	4	400	117	2,700'	128/58.1
DSA5	5	500	119	3,000'	151/68.5
DSA6	6	600	121	3,400'	169/76.7



## DIRECTIONAL SPEAKER ARRAY (DSA)



### SPECIFICATIONS

Color:	Black projectors with Off-White Housing
Paint:	TGIC – Polyester Powder Coat Highly corrosion resistant
Frequency Response:	300Hz - 4000Hz

### HOW TO ORDER

- The DSA speaker array is used in conjunction with the MCP controller. The MCP houses the amplifiers that drive the DSA speaker array. Each DSA is made up of individual 100 watt speakers.  
**FOR EXAMPLE:** A DSA4 has four 100 watt speakers.
- Multiple DSA arrays can be controlled by a single MCP as long as the total wattage meets or exceeds the total wattage required by the DSAs. The total watts required is the sum of all 100 watt speakers from each DSA.
- *Call the factory for assistance in specifying an outdoor warning system*

### MOUNTING KITS

<b>Model</b>	<b>Mounting Configuration</b>
DSAMK1	One vertical support wall mount
DSAMK2	Two vertical supports 180° apart on pole
DSAMK4	Four vertical supports 90° or 180° apart, pole mounted